

ориентация на извод P/ pump port P-direction →

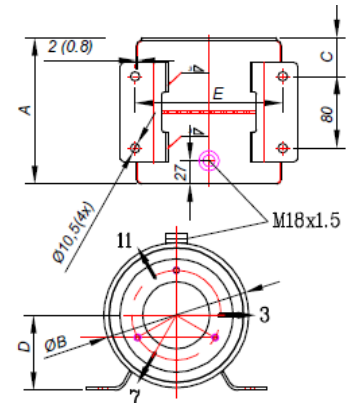
| резервоар стандартен цилиндричен за помпи PRP ... tank standard for pumps PRP ... | | | | | | | | | |
|--|----------------|----------|------------------|----------|-----|-----|-----|-----|-----|
| 3 отвора / with 3 holes M8 | | | | | | | | | |
| | thickness 2 mm | | thickness 0.8 mm | | A | ØB | C | D | E |
| 2 L | R2/3 | (502-01) | R2/3c | (502-02) | 130 | 160 | 30 | 85 | 165 |
| 3 L | R3/3 | (416-01) | R3/3c | (416-02) | 160 | 160 | 40 | 85 | 165 |
| 5 L | R5/3 | (418-01) | R5/3c | (418-02) | 215 | 185 | 53 | 100 | 165 |
| 7 L | R7/3 | (500-01) | R7/3c | (500-02) | 245 | 53 | 115 | 165 | |

| 6 отвора / with 6 holes M8 | | | | | | | | | |
|----------------------------|----------------|-------|------------------|----------|-----|-----|----|-----|-----|
| | thickness 2 mm | | thickness 0.8 mm | | A | ØB | C | D | E |
| 2 L | R2/6 | (502) | R2/6c | (502-03) | 130 | 160 | 30 | 85 | 165 |
| 3 L | R3/6 | (416) | R3/6c | (416-03) | 160 | 160 | 40 | 85 | 165 |
| 5 L | R5/6 | (418) | R5/6c | (418-03) | 215 | 185 | 53 | 100 | 165 |
| 7 L | R7/6 | (500) | R7/6c | (500-03) | 245 | 205 | 53 | 115 | 165 |

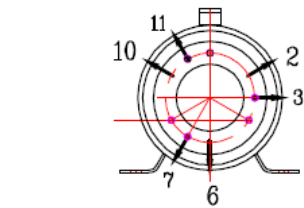
- * резервоар с 6 отвора - външен пръстен V
- * tank with 6 holes - outside sealing V
- * tank without Hole M18x1.5 - example R2/3cx

| резервоар стандартен цилиндричен Rc за помпи PRP ... tank standard type Rc for pumps PRP ... | | | | | | |
|---|------------------|--------|-----|-----|----|-----|
| 3 отвора / with 3 holes M8 | | | | | | |
| | thickness 0.8 mm | | A | ØB | C | E |
| 3 L | Rc3/3 | 533-01 | 157 | 160 | 15 | 165 |
| 4 L | Rc4/3 | 533 | 205 | 160 | 15 | 165 |

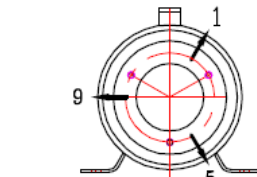
| 6 отвора / with 6 holes M8 | | | | | | |
|----------------------------|------------------|--------|-----|-----|----|-----|
| | thickness 0.8 mm | | A | ØB | C | E |
| 3 L | Rc3/6 | 533-02 | 157 | 160 | 15 | 165 |
| 4 L | Rc4/6 | 533-03 | 205 | 160 | 15 | 165 |



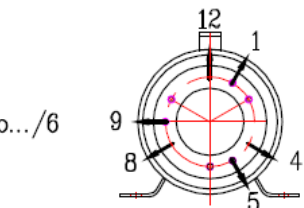
R.../3



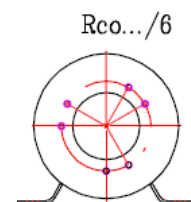
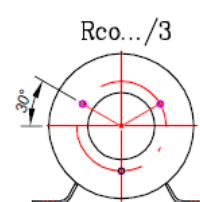
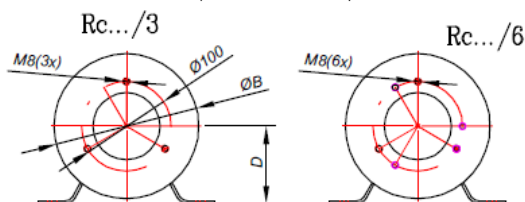
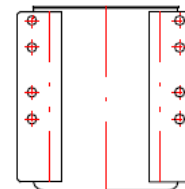
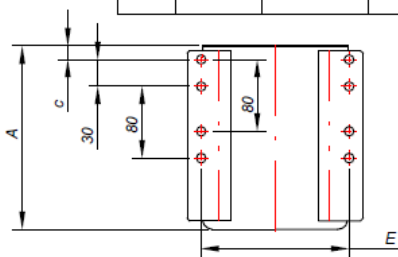
R.../6



Ro.../3



Ro.../6



- * резервоар с 6 отвора - външен пръстен V
- * tank with 6 holes - outside sealing V