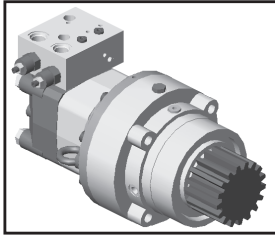
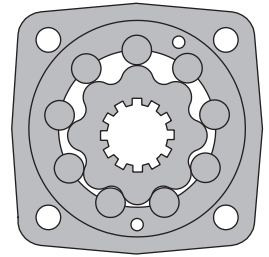


# HYDRAULIC MOTOR-BRAKES TW500B350...V



## APPLICATION

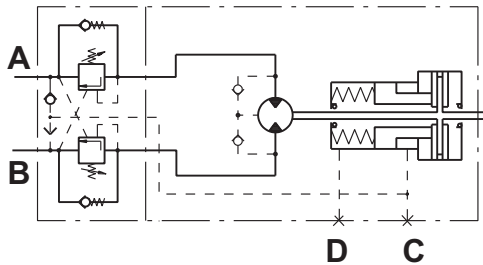
- » Wheel drives
- » Conveyors
- » Rotators
- » Positioners
- » Winches
- » Swing drives
- » Door openers



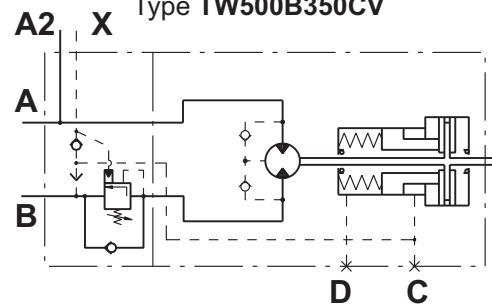
## CONTENTS

Specification data .....	40
Dimensions and mounting .....	41
Function diagrams .....	41
Order code .....	42

Motor-Brake  
Type TW500B350V



Motor-Brake  
Type TW500B350CV



## SPECIFICATION DATA

Type	TW500B350...V
<b>Displacement, cm<sup>3</sup>/rev [in<sup>3</sup>/rev]</b>	475 [29]
<b>Max. Speed, RPM</b>	Cont. 40 Int.* 60
<b>Max. Torque, daNm [lb-in]</b>	Cont. 114 [10 000] Int.* 135 [12 000]
<b>Max. Output, kW [HP]</b>	Cont. 4,1 [5.4] Int.* 7,0 [9.39]
<b>Max. Pressure Drop, bar [PSI]</b>	Cont. 170 [2500] Int.* 200 [2900]
<b>Max. Oil Flow, lpm [GPM]</b>	Cont. 20 [5.3] Int.* 35 [9.2]
<b>Max. Return Pressure without Drain Line or Max. Pressure in Drain Line, bar [PSI]</b>	75 [1088]
<b>Min. Starting Torque, daNm [lb-in]</b>	At max. press. drop Cont. 95 [8400] At max. press. drop Int.* 112 [9940]
<b>Min. Speed**, RPM</b>	5
<b>Static Torque for the Brake***, daNm [lb-in]</b>	164 [14515]
<b>Release Pressure ±10%, bar [PSI]</b>	initial 22,5...27,5 [326...400] full 28...34 [406...493]
<b>Max. Steering Pressure, bar [PSI]</b>	245 [3553]
<b>Max. Pressure in Drain Space for the Brake, bar [PSI]</b>	0,5 [7]
<b>Pilot Ratio for the Valve</b>	4,25:1

\* Intermittent operation: the permissible values may occur for max. 10% of every minute.

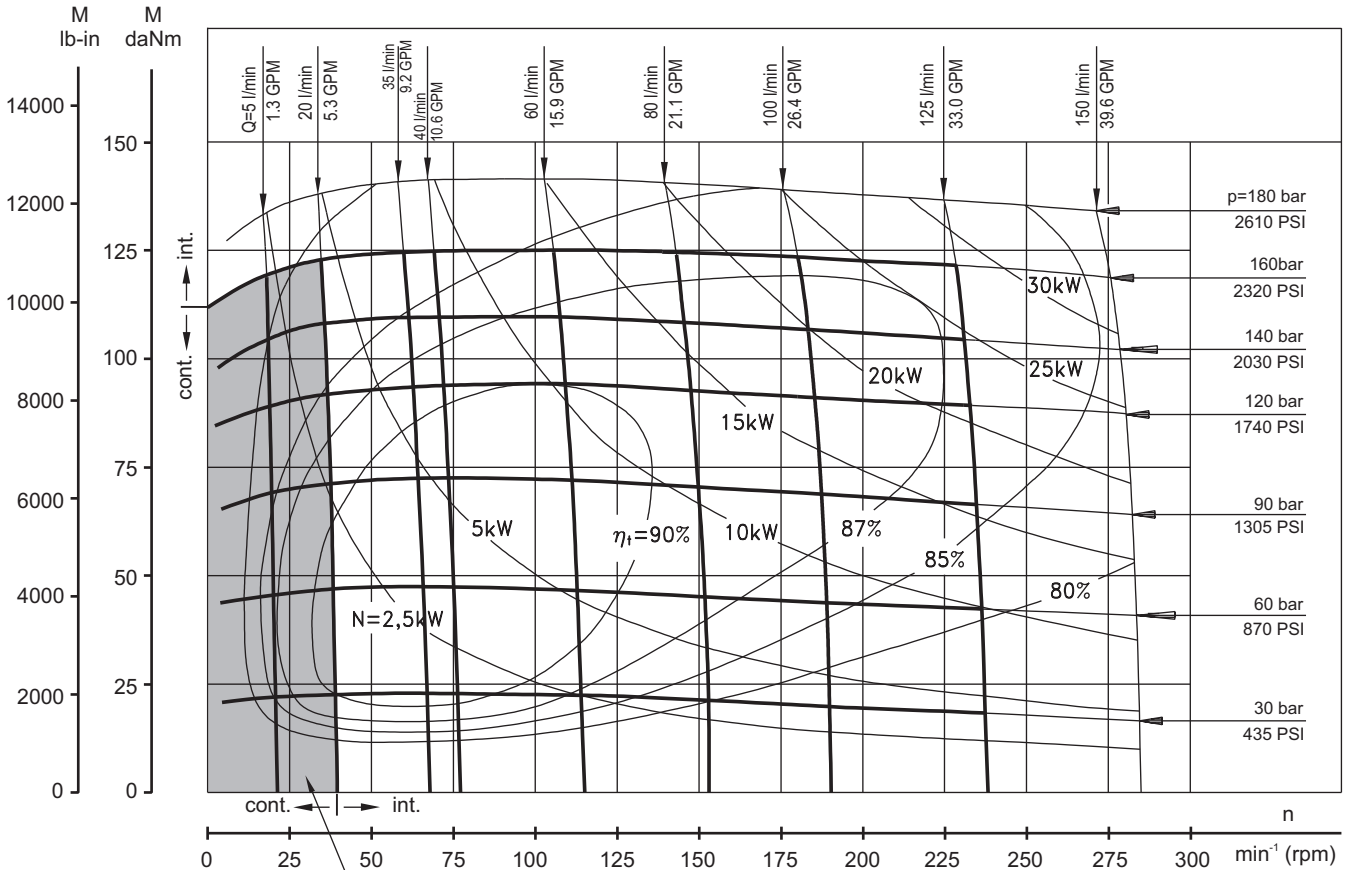
\*\* For speeds of 5 RPM lower than given, consult factory or your regional manager.

\*\*\* Static torque is obtained at working pressure - 0 bar [0 PSI].



**FUNCTION DIAGRAMS**

**TW 500**



The working area  
for TW500B350V

**ORDER CODE**

1	2	3	4	5	6	7	8
<b>T</b>	<b>W</b>	<b>500</b>	<b>B</b>	<b>350</b>	<b>V</b>		

- Pos.1 - Type  
**T** - Motor MLHT
- Pos.2 - Displacement code
- Pos.3 - Brake
- Pos.4 - Brake Type

- Pos.5 - Shaft Extension\*  
omit - 17T 5/7 pitch 20° involute  
**C** - Straight key 1/2"x1/2"x1 1/2"
- Pos.6 - Valve
- Pos.7 - Special Features (see page 64)
- Pos.8 - Design Series  
omit - Factory specified

The motor-brakes are mangano-phosphatized as standard.